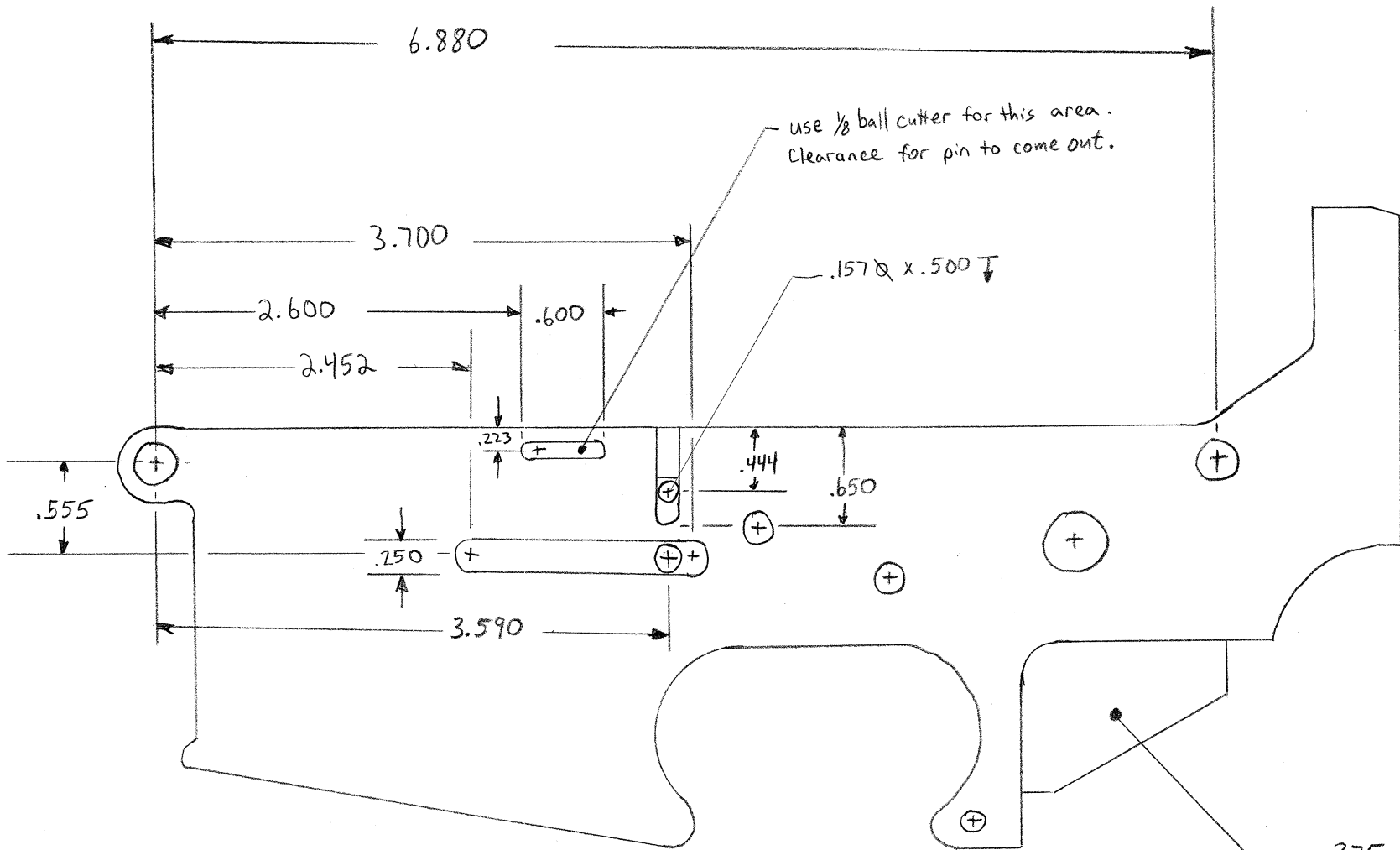


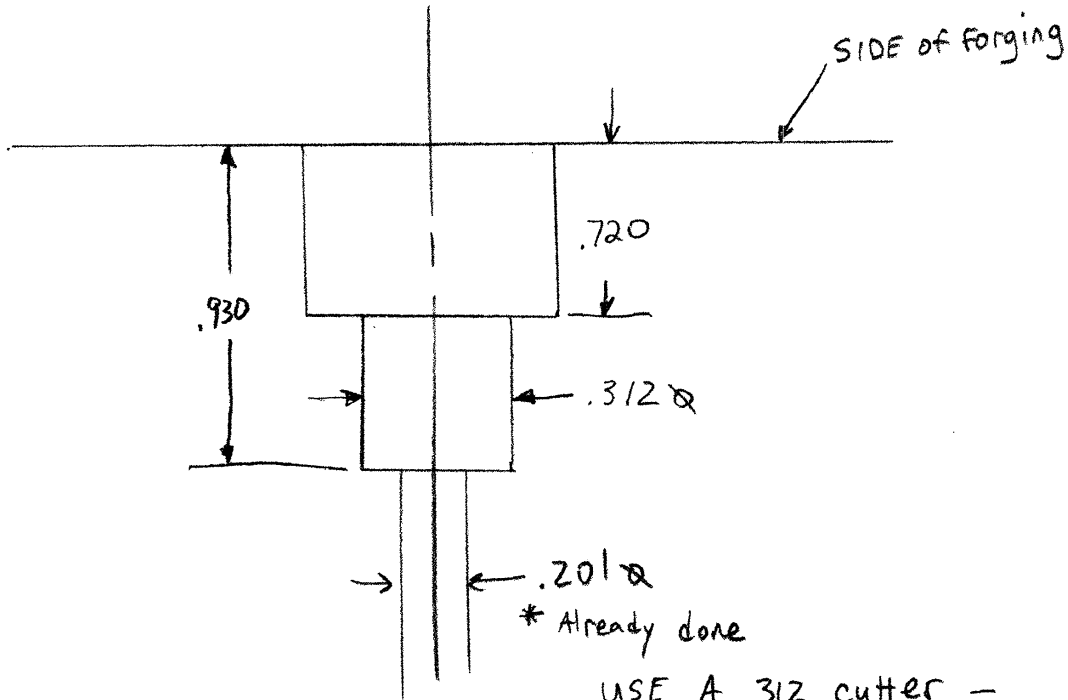
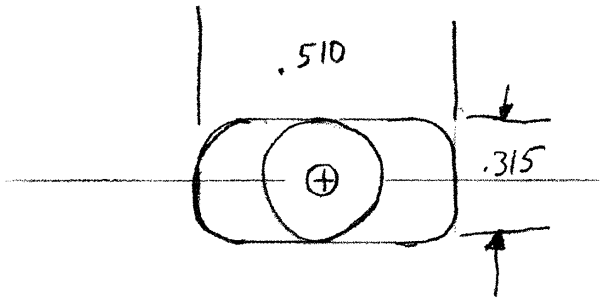
* note - Rear detent is $.093$ thru inline with selector detent

$.125$ & this side only
 $.187$ c'bore to clean face
 min cleanup.

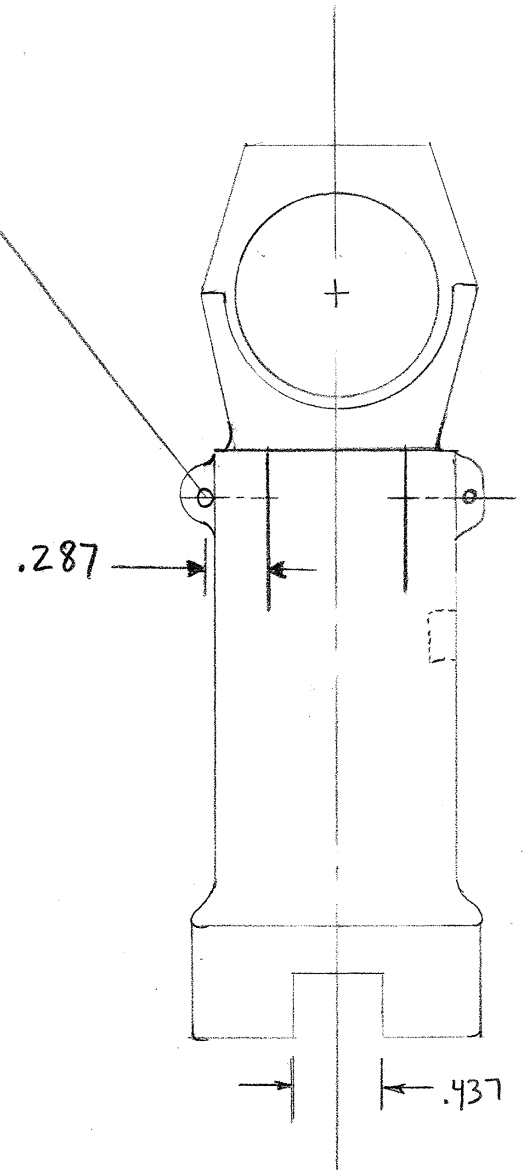


.375 on center line of part.
 use grip + a spotter for
 hole location or use AR15
 print for

AR10 mag Release



.097-.099 to depth shown



when on location go down .930 - back up to .720 then make table movement of .100 in both directions. Dial over on the X movement .002 to clean the walls up.