

## \* Course contents :

- Logic families and its characteristics.
- Encoder / Decoder
- Multiplexer / Demultiplexer } Combinational Logic circuits
- Sequential logic circuit  $\Rightarrow$  flipflop
- counters
- Shift Registers

## \* Types of logic families : (Based on its Basic elements)

- TTL (transistor - Transistor Logic)
  - Basic element BJT (0  $\rightarrow$  5V)
- ECL (Emitter coupled Logic)
  - Basic element BJT (negative Power-supply)
- CMOS (Complementary MOS (Metal-oxide-semiconductor))
  - Basic element  $\Rightarrow$  Both PMOS, NMOS

## \* Integrated Circuits (ICs)

- SSI (Small Scale Integration)

12 gate / chip

- MSI (medium scale Integration)

12 ~ 99 gate / chip

- LSI (large scale Integration)

1000 gate / chip

- VLSI (very - large scale Interation)

100,000 gate / chip

⇒ More development chips ⇒ faster, cheaper

⇒ 7400, NAND, 4 gate / chip

## \* Subfamily TTL

\* Low Power

\* Fast TTL

\* Advanced TTL As TTL

\* ALS TTL

(Advanced Low Power schotlky)

SN 74 ALS XXX A

TTL family type

(74) → IC Max temp.

o → 70°

74f → TTL

74cf → CMOS

(54) → TTL used for → military applications

(max temp. 55° → 125°)

(SN) → manf'ature الشركة المنتجة

- SN → Texas instrument

- S → signetics

- DM → national instrument

(A) → اخر رمز  
(نوع Package)

لاستيك ←  
سيراميك ←

N → Plastic - dual - in - line

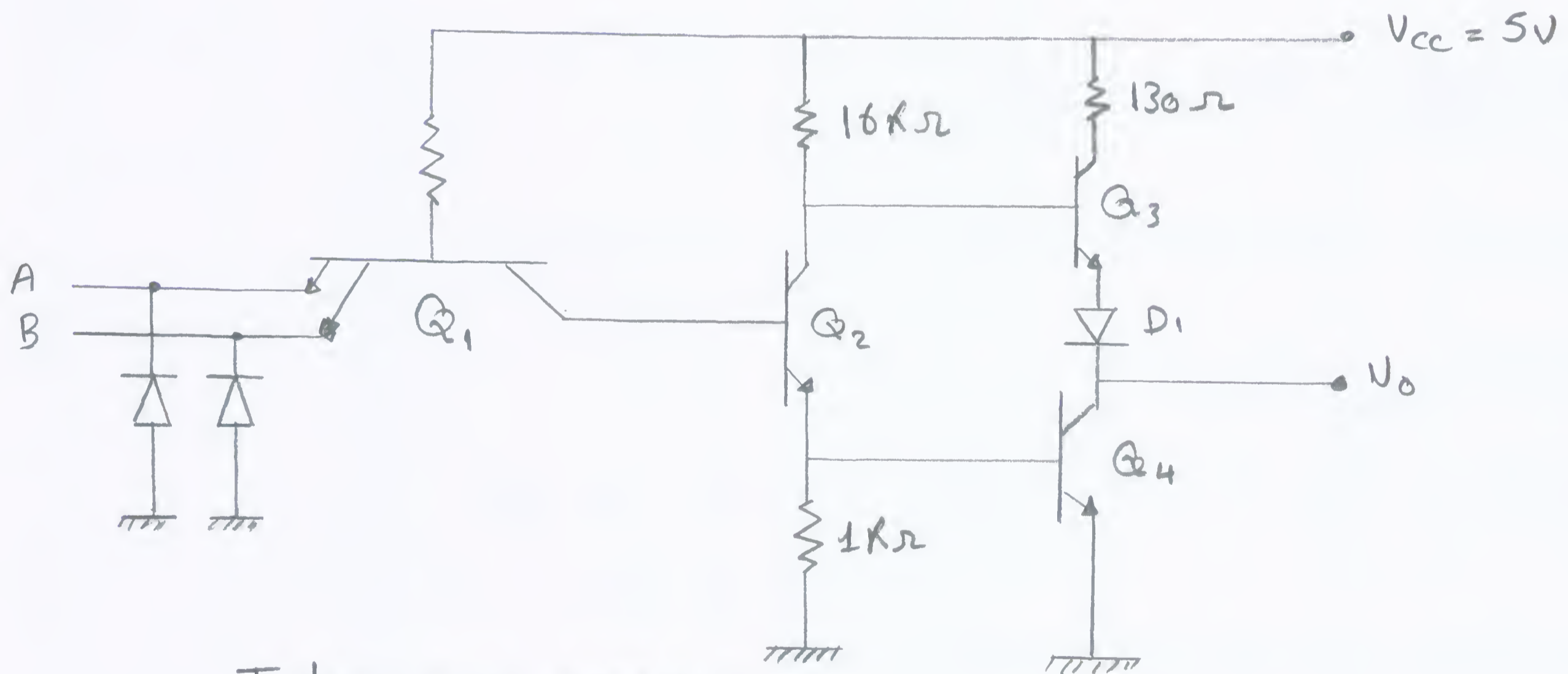
W → ceramic Package

(XXX) → رقم ال IC  
138

وتحديده نوع ال gate

### \* 7400 (NAND Gate)

fundamental (Basic) TTL



Totem-pole NAND gate

Q<sub>1</sub> → Multi-emitter transistor

Q<sub>3</sub>, Q<sub>4</sub> → totem pole transistors

Q<sub>2</sub> → control of Q<sub>3</sub> & Q<sub>4</sub>

